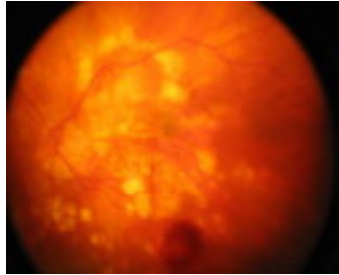


Understanding diabetic retinopathy



The Inaugural Alex Cohen Diabetes Scholarship was awarded to Lakshini Weerasekera at the Centre for Diabetes Research for a study into understanding diabetic retinopathy (blindness) including the progression of retinopathy to identify the genes that cause these changes.

Lakshini's PhD project involves investigating the 'Gene Mine' resource to identify a suitable mouse model (strain) to study the eye complication, Diabetic Retinopathy, which can develop as a complication of diabetes.

There are preliminary results on eight strains of mice that have been identified. One strain has shown early signs of Diabetic Retinopathy where bulging structures occur deep in the capillary bed.

Lakshini is currently using several methods to confirm this initial structural change. We look forward to further results in the near future.



Lakshini Weerasekera with Professor Alex Cohen
at the DRFWA Research Symposium in 2010